

St. Lucia Cds 2012-17

Agard

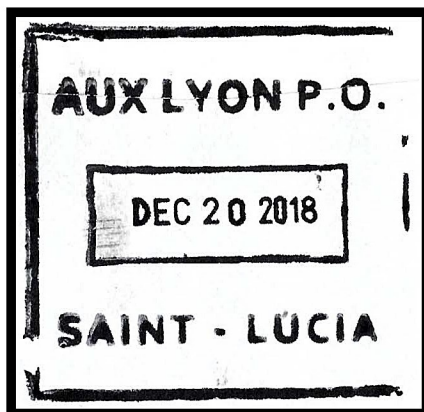


Anse La Raye

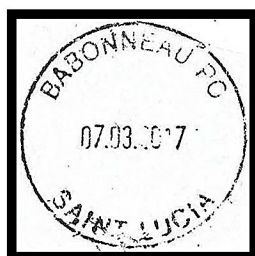


2011-17

Aux Lyon



Babonneau



Balata



2011-18

Bexon



St. Lucia Cds 2012-17

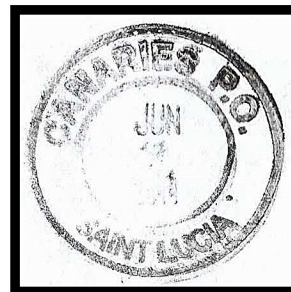
Bocage



Boguis



Canaries



Chausee

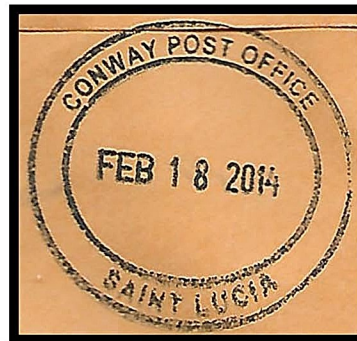


Choiseul

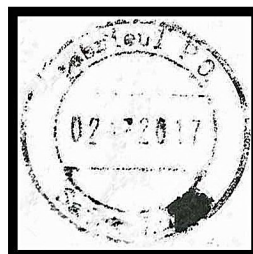


St. Lucia Cds 2012-7

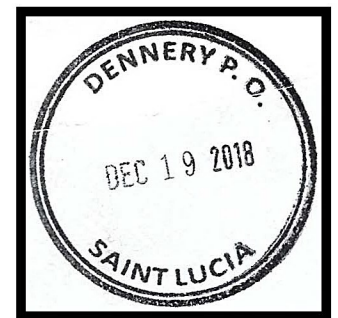
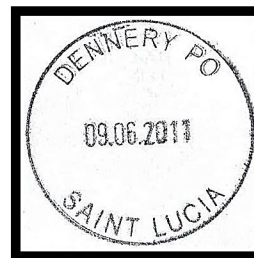
Conway



Debrioul



Dennery

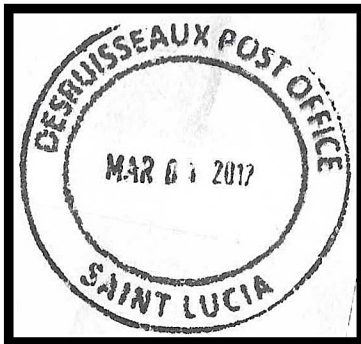


Derniere Riviere



St. Lucia Cds 2012-17

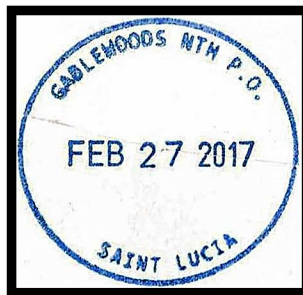
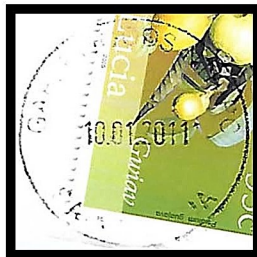
Desruisseaux



Fond Assau

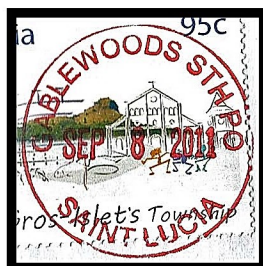


Gablewoods North



2012 -17

Gablewoods South



St. Lucia Cds 2012-17

Gardette



Grand Riviere



Gros Islet

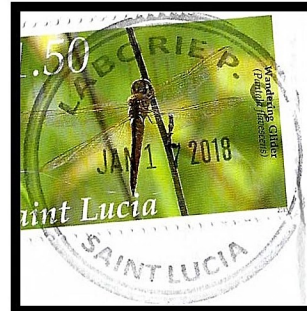


St. Lucia Cds 2012-17

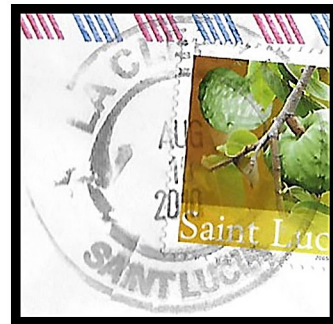
Jacmel



Laborie



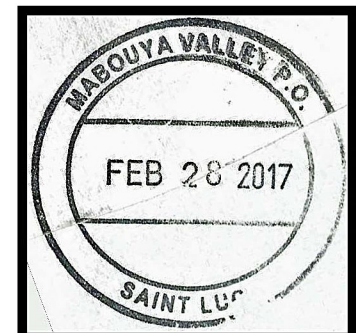
La Clery



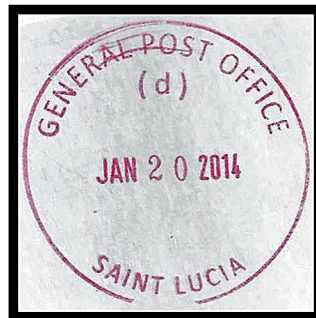
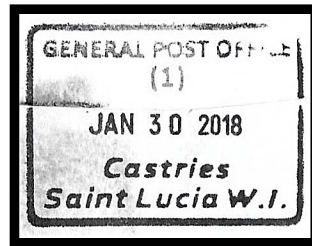
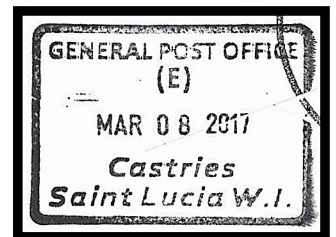
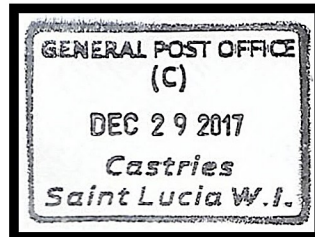
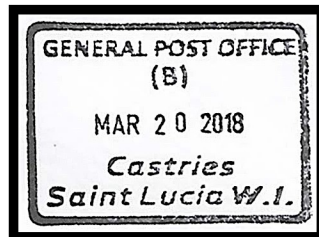
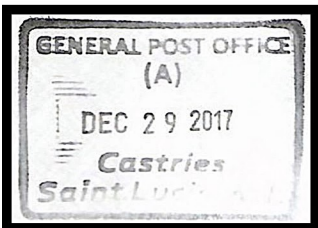
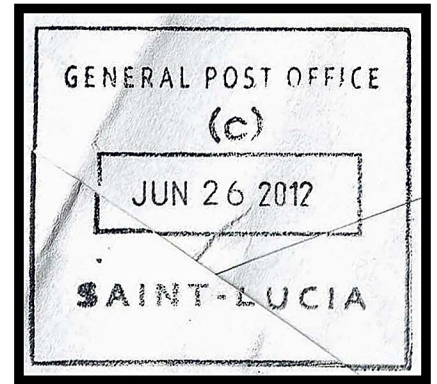
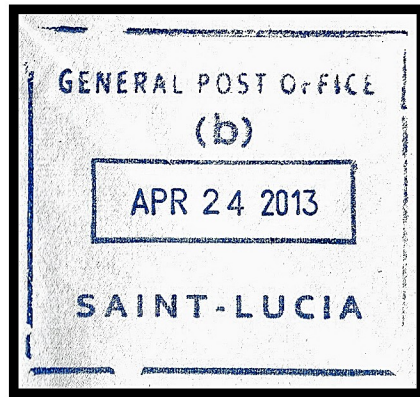
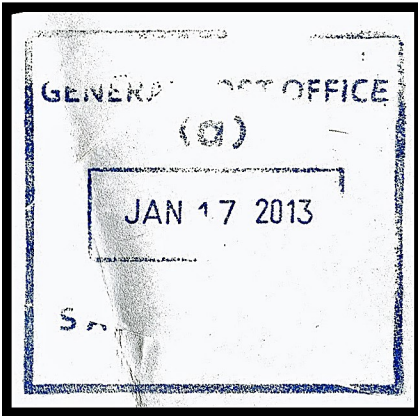
La Croix Maingot



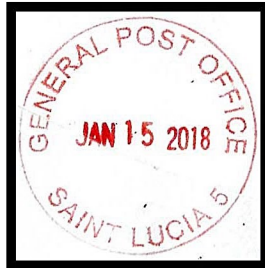
Mabouya Valley



St. Lucia Cancels 2014



St. Lucia Cancels 2014



Mar 15, 2016

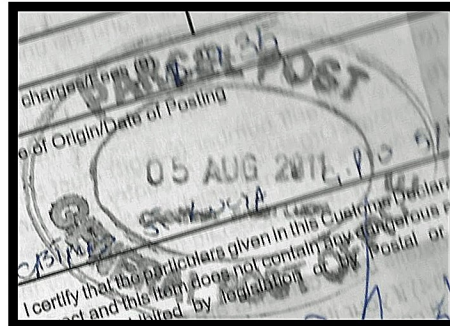
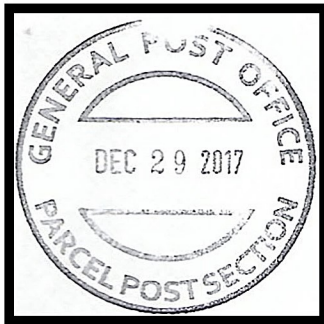


St. Lucia Cancels 2014



St. Lucia Cancels 2014

Parcel Post



St. Lucia Cds 2012-17

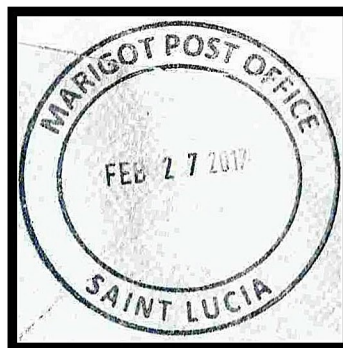
Marc



Marchand



Marigot



St. Lucia Cds 2012-17

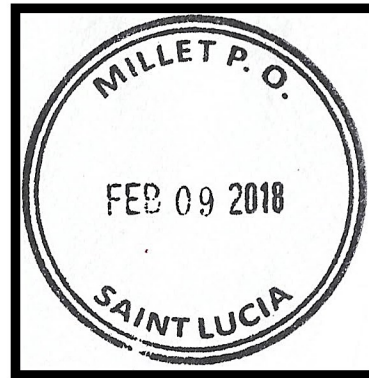
Marisule



Micoud



Millet



2011-17

Mon Repos



Monchy



Moreau

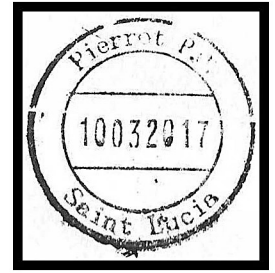


St. Lucia Cds 2012-17

Morne Fortune



Pierrot



2012-17

Rodney Bay



2014- 17

May 13, 2013-
Sept 14, 2017

Jul 24, 2017-

Saltibus



2012-17

St. Lucia Cds 2012-17

Soufriere



Sub Post Office



Ti Rocher



Ti Rocher



Vanard



Vieux Fort

